



Quality Assurance Unit



Basil C. Gounaris
Professor of Modern History
Member of
the Quality Assurance Unit of
the Aristotle University of
Thessaloniki





“Quality Assurance Unit” Project

The Quality Assurance Unit (QAU) project at the AUTH is co-financed by Greece and the European Union.

The Project includes **four deliverables**:

- QAU staffing, organisation and operation.
- Development of Quality Assurance Information System and QAU website.
- Networking, Promotion, Publicity.
- QAU project evaluation.



Hellenic Quality Assurance Framework

Regulated by Law No 3374/2005 which established:

- A framework for quality assurance for higher education.
- Relevant procedures and processes.
- The Hellenic Quality Assurance and Accreditation Agency (HQA).

Quality Assurance Criteria:

- Programmes of study
- Teaching
- Research
- All other services





Quality Assurance Bodies

Hellenic Quality Assurance and Accreditation Agency (HQA)

(national level appointed by the Minister for Education)

External Evaluation Committee

(external evaluation level, appointed by the HQA)

Quality Assurance Unit

(institutional level, appointed by the Senate/Council)

Internal Evaluation Group

(School level, appointed by the General Assembly)

Special Evaluation Group

(programme level, appointed by the General Assembly)





AUTH Quality Assurance System

Adheres to the standards, guidelines, processes and procedures for quality assurance set out by the HQA and by Law No 3374/2005.

Evaluation Processes:

- *Annual Evaluation*
- *Internal (Periodic) Evaluation every four years*
- *External Evaluation*



Quality Assurance at the School of History & Archaeology. A brief account

- Before 2007 evaluation was optional, personal and manual.
- April 2007: first steps for a full internal evaluation on the ADIP standards.
- 2008-2010: process of evaluation
- May 2009: first annual statistical report
- November 2011: Internal evaluation completed (2003-2009)
- January 2012: Update for 2009-2011
- February 2013: Update for 2011-2012.



Impediments

- *Negative attitude of the staff*
- *Reluctant Bureaucracy*
- *Unavailable technical assistance*
- *Absence of statistical data*
- *Absence of standard procedures*
- *Negative attitude of the students*
- *Size of the School.*



Novelties (on line): our tools for evaluation

- Personal Inventory Card
- Infrastructure Evaluation Form
- Courses
- Graduate Theses and Dissertations
- Publications at Institutional Repository
- Projects



Personal Inventory Card (on line)

- Personal data
- Education
- Administrative Work
- Teaching assignments
- Acknowledgment of Research and other Academic Work.
- Editorial boards, international lectures and committees, key-note addresses.
- Research Projects
- Research Infrastructure (evaluation of)
- Contact with Society
- Remarks-Comments for the Quality Assurance Unit



<http://qa.auth.gr/>

Statistical Reports

- Course Evaluation
- Census Records
- Tables for Internal Evaluation
- Cumulative Table of Publications
- Academic Statistics

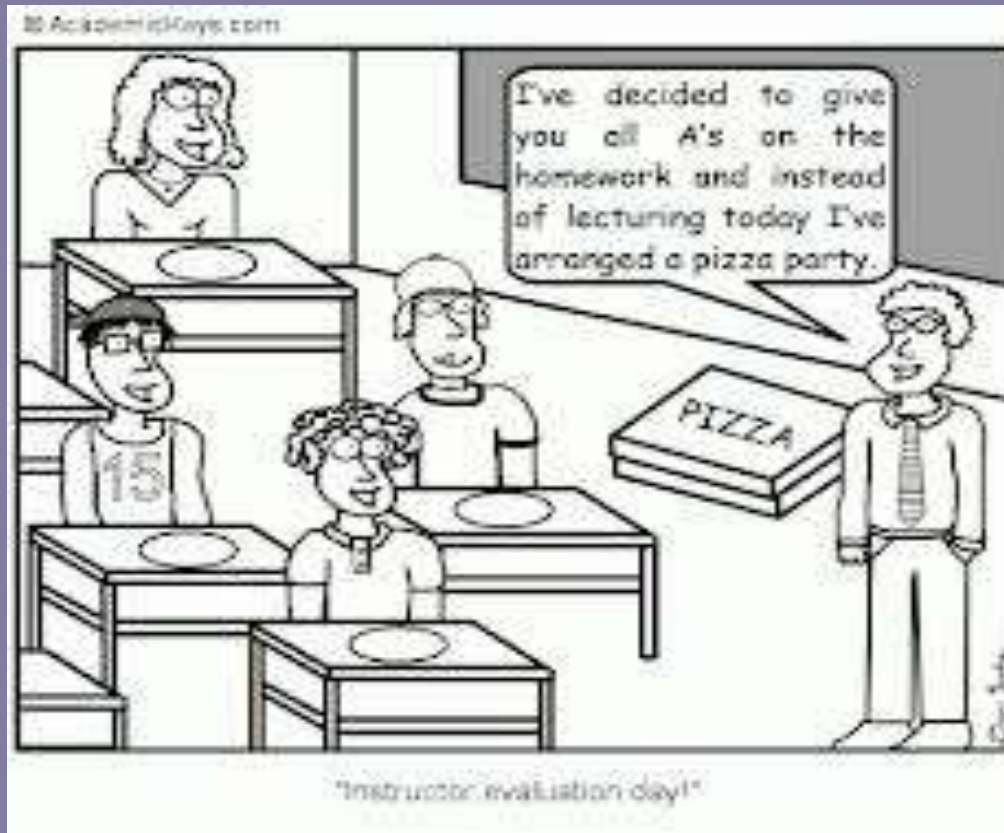


<http://qa.auth.gr/el/studyguide>

E-study guide (on line presentation)



Did it work?



Instructor: Evaluation Day!



Course Evaluation 2011-12

	nParticipated	NRegistered	%
1 st Year	15	263	5.7
2 nd Year	12	310	3.9
3 rd Year	24	297	8.1
4 th Year	23	321	7.2
Over 4 years	24	697	3.4
All students	98	1888	5.2

	nParticipated	NRegistered	%
1 st Year	18	258	7.0
2 nd Year	33	295	11.2
3 rd Year	35	278	12.6
4 th Year	36	319	11.3
Over 4 years	27	601	4.5
All students	149	1751	8.5



Course Evaluation 2012-13

	nParticipated	NRegistered	%
1 st Year	30	260	11.5
2 nd Year	18	224	8.0
3 rd Year	37	301	12.3
4 th Year	32	270	11.9
Over 4 years	51	742	6.9
All students	168	1797	9.3

	nParticipated	NRegistered	%
1 st Year	23	256	9.0
2 nd Year	12	222	5.4
3 rd Year	16	296	5.4
4 th Year	15	263	5.7
Over 4 years	23	670	3.4
All students	89	1707	5.2



Course Evaluation 2013-14

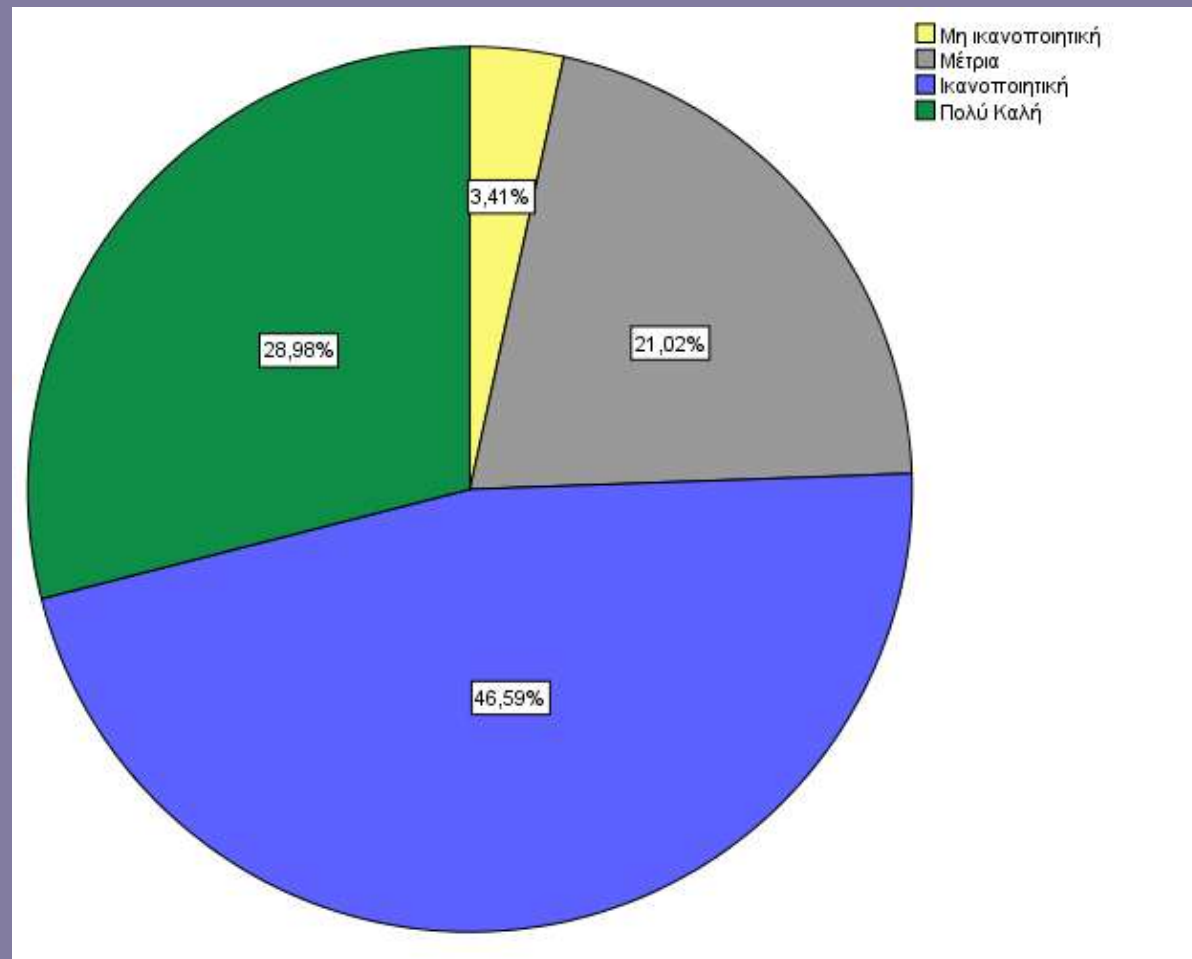
	nParticipated	NRegistered	%
1 st Year	31	222	14.0
2 nd Year	21	220	9.5
3 rd Year	24	222	10.8
4 th Year	26	294	8.8
Over 4 years	39	720	5.4
All students	141	1678	8.4



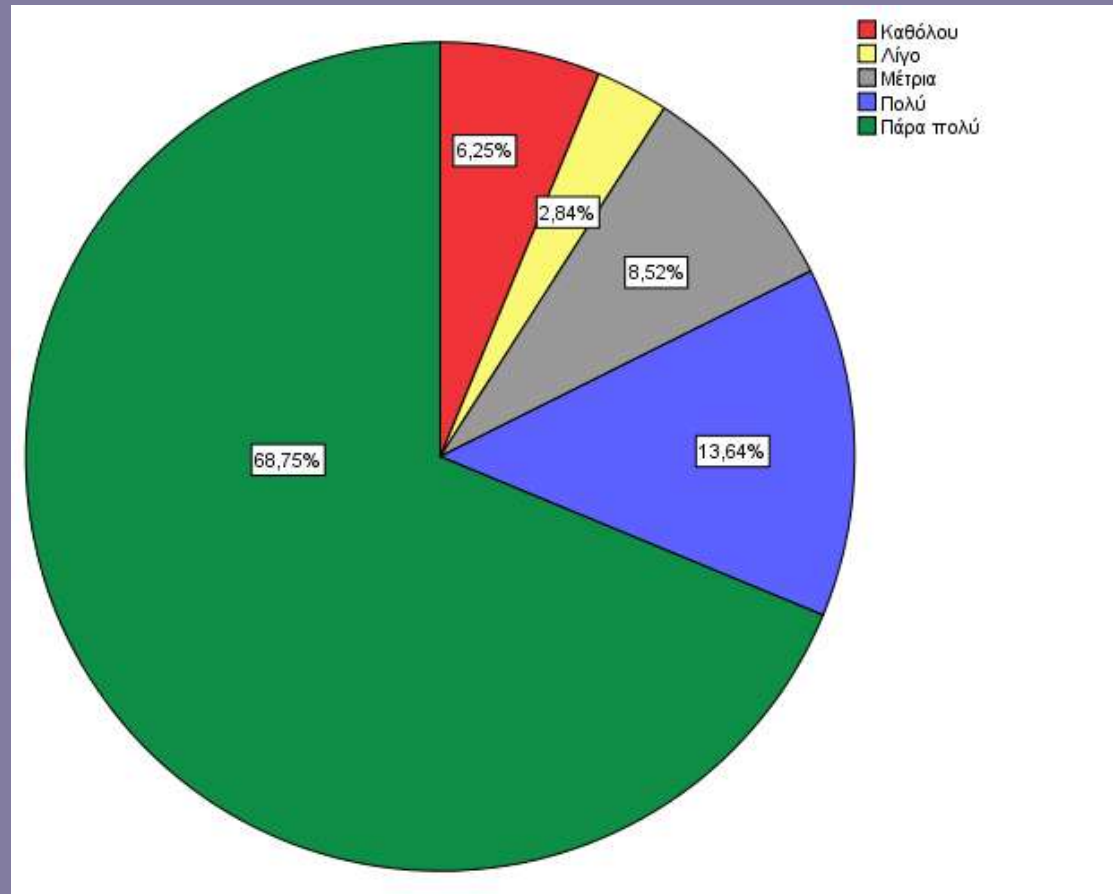
Why it doesn't work?



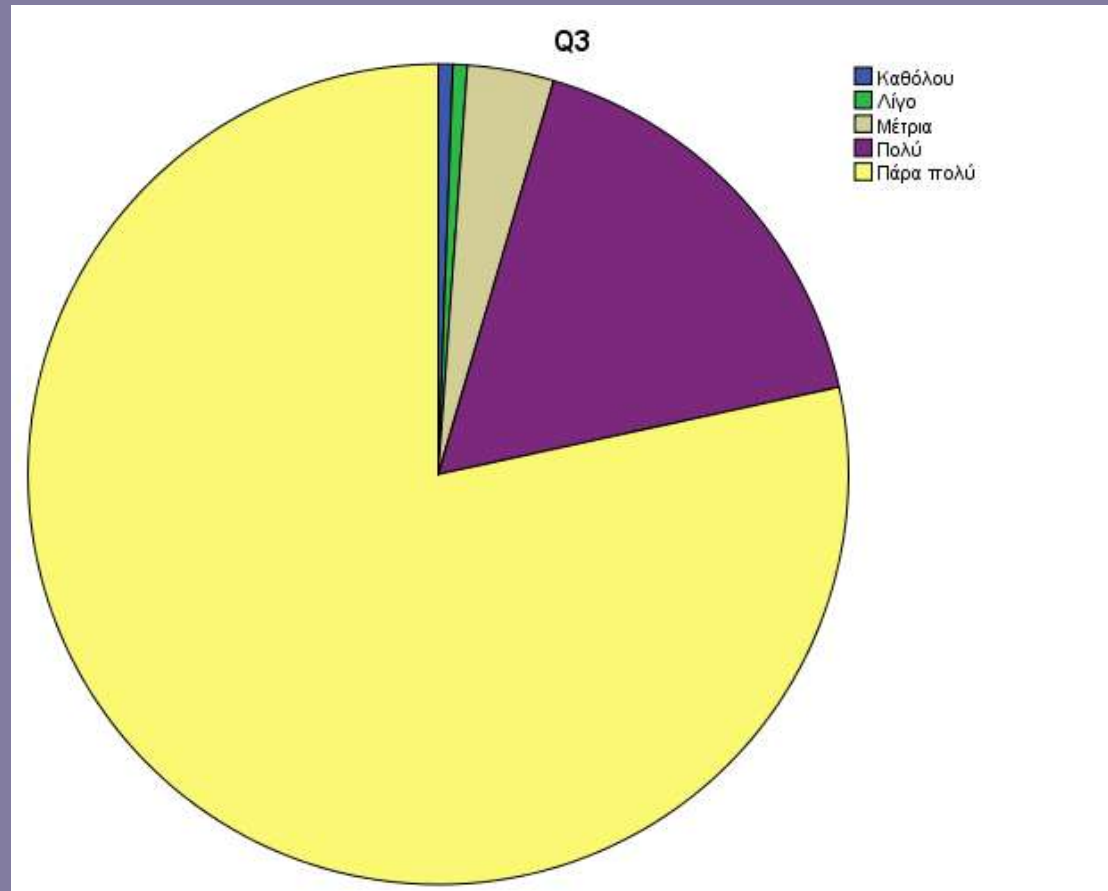
1. What do you think of the electronic evaluation?



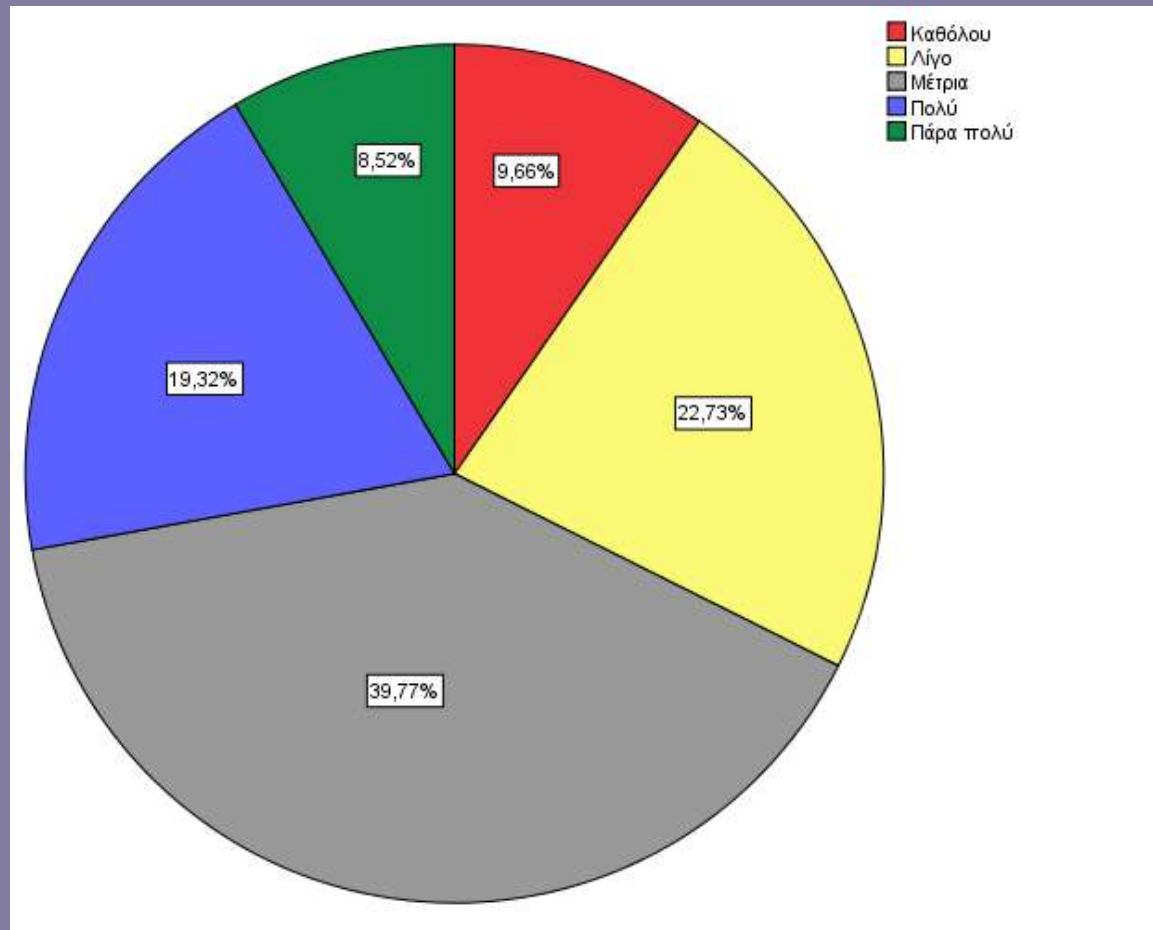
2. Do you prefer digital instead of printed evaluation forms in class?



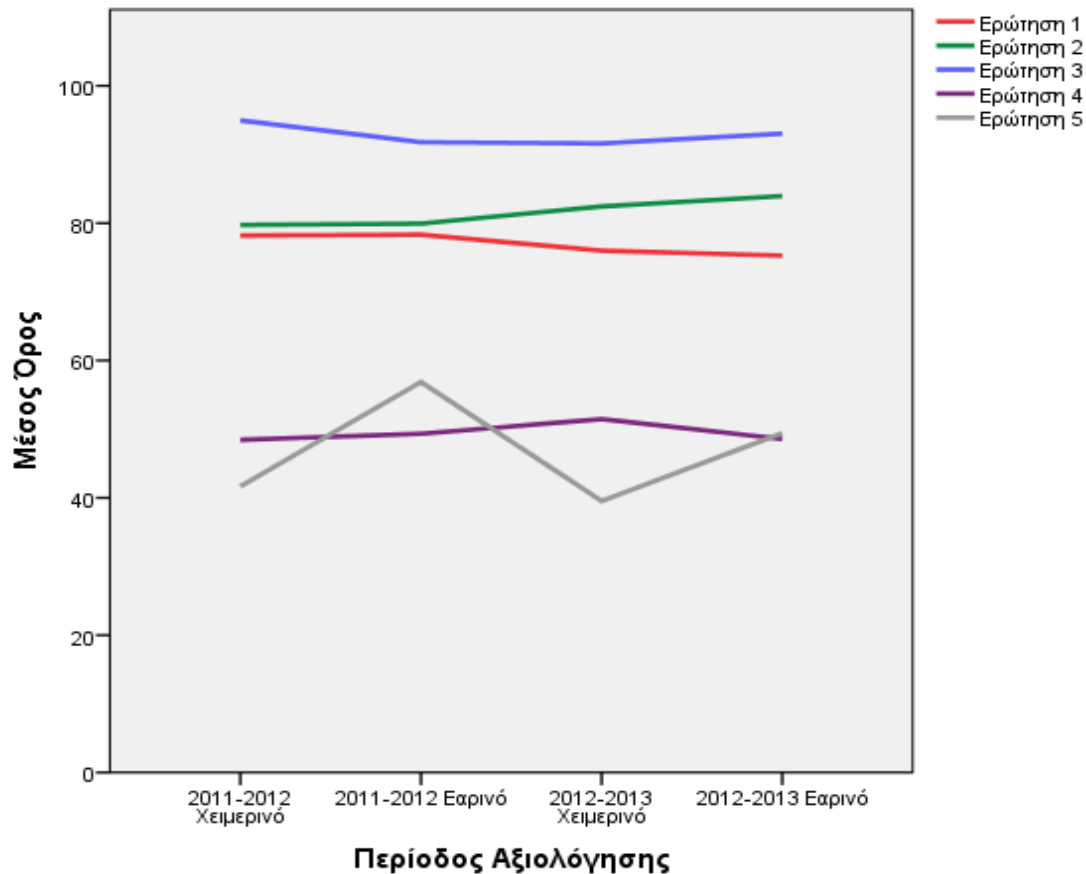
3. Do you think that the evaluation of courses and staff by students is useful?



4. Do you believe that your evaluation is taken into account by your teachers?



1. What do you think of the electronic evaluation?
2. Do you prefer digital instead of printed evaluation forms in class?
3. Do you think that the evaluation of courses and staff by students is useful?
4. Do you think that the evaluation is considered by the teaching staff?
5. How many courses have you evaluated so far?



Course Evaluation

	Very Negative	Negative	Neutral	Positive	Very Positive	Unaware	Average
fall 2011	4.2	7.2	16.2	27.1	38.7	4.4	73.8
spring 2012	2.9	4.9	16.5	32.1	37.5	3.5	75.7
fall 2012	5.6	9.2	21.8	27.2	29.8	4.5	67.8
spring 2013	5.5	8.1	21.9	28.8	29.0	3.7	68.1
fall 2013	3.2	8.4	22.5	26.4	32.2	7.0	70.5



Staff Evaluation

	Very Negative	Negative	Neutral	Positive	Very Positive	Unaware	Average
fall 2011	4.1	5.4	11.9	24.0	51.3	2.0	79.2
spring 2012	1.2	2.8	8.6	26.5	60.0	0.8	85.7
fall 2012	5.3	6.1	12.7	24.2	48.9	2.5	77.1
spring 2013	6.2	8.4	13.5	26.3	44.2	0.9	73.8
fall 2013	3.8	7.2	13.0	23.0	50.7	2.1	78.1



Self-Evaluation

	Very Negative	Negative	Neutral	Positive	Very Positive	Unaware	Average
fall 2011	7.1	8.5	12.5	27.3	27.3	4.9	67.9
spring 2012	6.3	4.8	8.4	26.8	34.5	8.7	74.2
fall 2012	8.2	9.4	10.1	25.5	31.1	5.8	68.3
spring 2013	.9	9.3	9.5	23.0	30.8	5.6	67.7
fall 2013	19.5	17.7	13.2	18.8	25.1	2.3	53.3



Remarks

- Careless answers
- Low participation, especially after 4 years of study
- Insignificant participation of post-graduates
- Students are reluctant to evaluate twice a year
- Statistically invalid conclusions
- Staff better than courses
- Learning outcomes achieved (>70%), yet percentage dropping every semester from fall 2011 (87%, 79%, 75%, 73%, 72%).
- Working load overestimated (Ects)
- Rather positive view of infrastructure



ΤΟ ΑΠΘ ΣΤΙΣ ΔΙΕΘΝΕΙΣ ΚΑΤΑΤΑΞΕΙΣ (9/2013)

	QS BANKING (αλλοδαποί φοιτητές, αλλοδαπά μέλη ΔΕΠ, άποψη ακαδημαϊκών, άποψη εργοδοτών, ετεροαναφορές/ΔΕΠ, φοιτητές/αναλογία) www.topuniversities.com		ARWU (SHANGAI) (απόφοιτοι/βραβεία, ερευνητές με υψηλό αριθμό αναφορών στις Φυσικές & Θετικές επιστήμες, άρθρα στο ευρετήριο ετεροαναφορών Θετικών & Κοινωνικών Επιστημών, κατά κεφαλήν απόδοση/μέγεθος Ιδρύματος) www.arwu.org		WEBOMETRICS (αριθμός δημοσιεύσεων, Rich Files, ΔΕΠ, Ορατότητα, Διδασκαλία) www.webometrics.info
	ΑΕΙ	Πεδίο	ΑΕΙ	Πεδίο (Με δημοσιοποίηση στατιστικά)	ΑΕΙ
2013	471-480	ΕΥΡΥΤΕΡΑ ΕΠΙΣΤΗΜΟΝΙΚΑ ΠΕΔΙΑ (9/13) 192 Τέχνες & Ανθρωπιστικές Επιστήμες 193 Μηχανική & Τεχνολογία ΘΕΜΑΤΙΚΑ ΠΕΔΙΑ 151-200 Ιστορία 51-100 Πολιτικών Μηχανικών 101-150 Χημικών Μηχανικών 101-150 Ηλεκτρολόγων Μηχανικών 151-200 Μηχανολόγων Μηχανικών 101-150 Επιστήμες Επικοινωνίας & Μέσων 151-200 Νομική ΕΥΡΥΤΕΡΑ ΕΠΙΣΤΗΜΟΝΙΚΑ ΠΕΔΙΑ 151-200 Επιστήμες γης & θαλάσσης 151-200 Περιβαλλοντικών Επιστημών 151-200 Επιστήμες Υλικών	301-400	151-200 Επιστήμες Μηχανικών/ Τεχνολογίας Υπολογιστών 151-200 Επιστήμες Πληροφορικής	07/2013: 226 01/2013: 194
2012	451-500	ΘΕΜΑΤΙΚΑ ΠΕΔΙΑ 101-150 Πολιτικών Μηχανικών 101-150 Χημικών Μηχανικών 101-150 Εκπαίδευση 151-200 Επιστήμες Επικοινωνίας & Μέσων ΕΥΡΥΤΕΡΑ ΕΠΙΣΤΗΜΟΝΙΚΑ ΠΕΔΙΑ 221 Τέχνες & Ανθρωπιστικά 265 Μηχανικών & Τεχνολογίας 341 Επιστήμες Ζωής & Ιατρική 336 Φυσικές Επιστήμες	301-400	101-150 Επιστήμες Μηχανικών/ Τεχνολογίας Υπολογιστών	07/2012: 199 01/2012: 153 (στο 0,78% παγκοσμίως)
2011	451-500	51-100 Πολιτικών Μηχανικών 101-150 Χημικών Μηχανικών 101-150 Επιστημών της γης 151-200 Μηχανολόγων, Αεροναυπηγών, Κατασκευαστικό 151-200 (Επιστημών Πληροφορικής/ Πληροφορικών Συστημάτων)	301-400	101-150 σε ένα ευρύ θεματικό πεδίο 151-200 σε ένα συγκεκριμένο θεματικό πεδίο	01/2011: 407 07/2011: 379
2010	401-450		301-400		01/2010: 403 07/2010: 387
2009	401-500		303-401		07/2009: 359

QS Ranking

- AUTH 301-400

<p>ΕΥΡΥΤΕΡΑ ΕΠΙΣΤΗΜΟΝΙΚΑ ΠΕΔΙΑ (9/13) 192 Τέχνες & Ανθρωπιστικές Επιστήμες 193 Μηχανική & Τεχνολογία</p> <p>ΘΕΜΑΤΙΚΑ ΠΕΔΙΑ</p> <p>151-200 Ιστορία</p> <p>51-100 Πολιτικών Μηχανικών</p> <p>101-150 Χημικών Μηχανικών</p> <p>101-150 Ηλεκτρολόγων Μηχανικών</p> <p>151-200 Μηχανολόγων Μηχανικών</p> <p>101-150 Επιστήμες Επικοινωνίας & Μέσων</p>	<p>301-400</p>



Faculty of Philosophy-Publications

School of Philology (1,110)

School of Psychology (1,071)

School of Philosophy and Pedagogy (456)

School of History and Archaeology (1,915)

School of English Language and Literature (1,430)

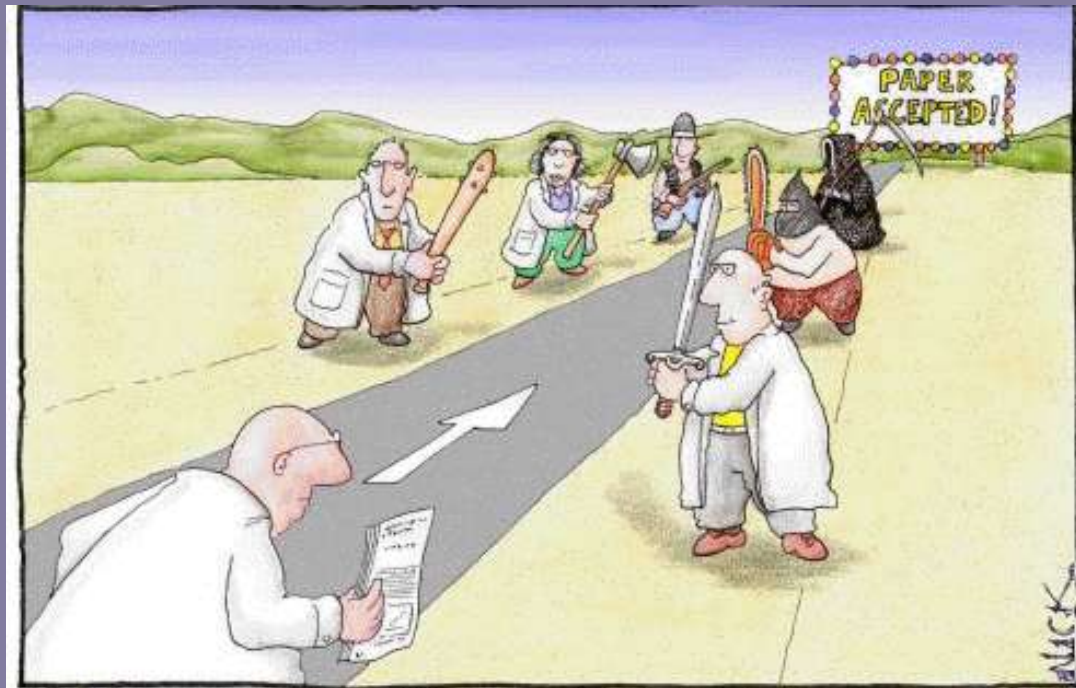
School of French Language and Literature (859)

School of German Language and Literature (262)

School of Italian Language and Literature (766)



Academic evaluation is not an easy process at any level, yet



Policy commitment of our School regarding Evaluation

- to disseminate the cause of evaluation at all levels.
- to encourage constantly student participation.
- to communicate the evaluation reports to the students each semester.
- to consult evaluation reports to assure the quality of academic policy
- to make the most of this external evaluation to achieve certification

